



***The Geological Society of Hong Kong
30th Anniversary Celebration***

(Since 1982)

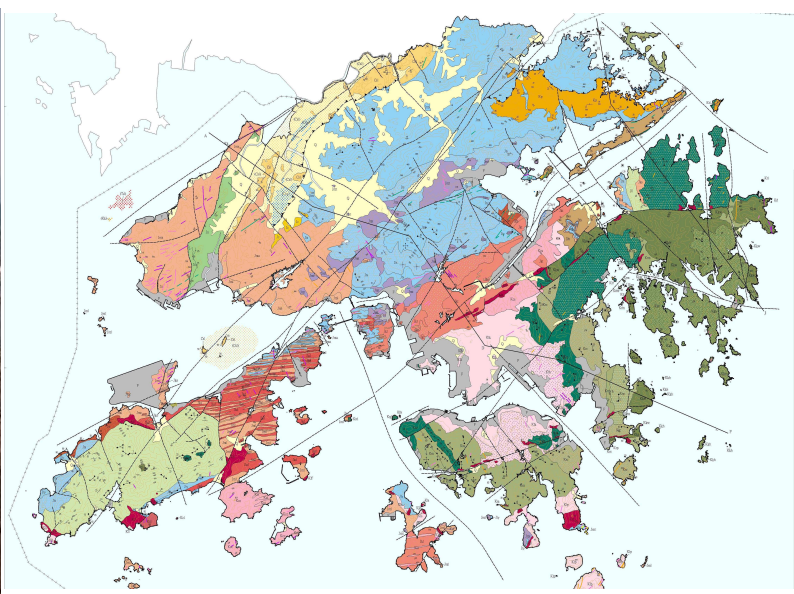


**Conference on Recent Development on
Geology and Engineering Geology**

30th Anniversary Dinner

Field Trips

29 - 30 June 2012



The Geological Society of Hong Kong 30th Anniversary Celebration



3rd Announcement

Programme

- Conference on 'Recent Development on Geology and Engineering Geology' on Friday 29th June 2012

Conference 9.00 am – 5.00 pm

- 30th Anniversary Dinner on Friday 29th June 2012, which starts at 7.00 pm
- Field Trips on Saturday 30th June 2012

Registration and Payment

Participants may join all the 3 functions (conference, dinner and field trip) or any combination of events.

Registration fee for conference on 29th June 2012 includes:

- Conference admission
- Lunch
- Coffee breaks
- Conference proceedings

Location

The conference and the 30th anniversary dinner will be held at the Crystal Ballroom of the Cityview Hotel (23 Waterloo Road, Kowloon, Hong Kong).

The Cityview Hotel is at 1-minute walk to MTR Yau Ma Tei Station (see attached map).

CPD certificate will be provided to participants.

Details of registration and payment method are provided in the registration form attached.

Exhibition and Sponsorship

Opportunity is available for contractors, consultants, suppliers, and manufacturers to showcase their capabilities and products at the Conference venue.

Contact Details

All enquiries should be addressed to [<geolsoc.hongkong.30@gmail.com>](mailto:geolsoc.hongkong.30@gmail.com).

A variety of sponsorship and advertising opportunities are available, details of which are provided on our conference website [<http://www.geolsoc.org.hk/30th.htm>](http://www.geolsoc.org.hk/30th.htm).

**The conference will be conducted in English/Mandarin. Instant translation for Mandarin to English would be provided.*

Inclement Weather Policy:

In case of typhoon signal no. 1 or no. 3 / Amber or Red rainstorm warning issued on the day of event, function will be scheduled as normal.

In case of typhoon signal no. 8 or above / Black rainstorm warning in force 2 hours before the starting time of event, function will be re-scheduled.

The Geological Society of Hong Kong - 30th Anniversary Celebration
Recent Development on Geology and Engineering Geology

29 June 2012

8:45-9:15	Registration
9:15-9:25	Opening Ceremony <u>Welcome Speech</u> <i>Mr. Paul CHEUNG, Chairman of the Conference Organizing Committee</i>
9:25-10:50	Session 1 - Chairman - Prof. Lung Sang CHAN (Department of Earth Sciences, HKU) <u>The Advances of Submarine Geosciences in China</u> <i>Prof. Xiang Long JIN, State Oceanic Administration</i> <u>Geo-engineering Lessons Learned from the 2008 Wenchuan Earthquake in Sichuan and Their Significance to Reconstruction</u> <i>Prof. Run Qiu HUANG, Chengdu University of Technology</i> <u>Updating of Hong Kong Geological Survey 1:20,000-scale Geological Maps</u> <i>Dr. Roderick J SEWELL, Geotechnical Engineering Office, HKSAR</i>
10:50-11:10	COFFEE BREAK
11:10-12:00	Session 2 - Chairman - Prof. Lung Sang CHAN (Department of Earth Sciences, HKU) <u>Long-term Strategy for Rock Cavern Development in Hong Kong</u> <i>Dr. Samuel K C NG, Geotechnical Engineering Office, HKSAR</i> <u>Interactions of Surface Processes with Tectonics of Taiwan: Insights from Sandbox Experiments</u> <i>Prof. Chia Yu LU, Department of Geosciences, National Taiwan University</i>
12:00-12:30	- Q&A
12:30-14:00	LUNCH (INCLUDED)
14:00-15:25	Session 3 - Chairman - Dr. Samuel K C NG (Geotechnical Engineering Office, HKSAR) <u>Cavern Design and Construction in Challenging Ground Conditions</u> <i>Mr. Felix AMBERG, Amberg Engineering Limited</i> <u>Examples of Determining Sensitive Zones of Active Reverse Fault Based on Field Observation: Case Study of the Hukou Fault and the Chihshang Fault in Taiwan</u> <i>Dr. Hao Tsu CHU, Taiwan Central Geological Survey</i> <u>New Evidences of Paleovolcanic Plug in Tuen Mun Area, Hong Kong</u> <i>Mr. Kuen Wai LAI, Fugro (Hong Kong) Limited</i>
15:25-15:45	COFFEE BREAK
15:45-16:35	Session 4 - Chairman - Dr. Samuel K C NG (Geotechnical Engineering Office, HKSAR) <u>Sustainable Use of Reservoirs in Taiwan - Underwater Tunnel Piercing Method</u> <i>Mr. Chia Han LEE, United Geotech. Inc.</i> <u>Thirty Years of Hong Kong Geology</u> <i>Prof. Lung Sang CHAN, Department of Earth Sciences, HKU</i>
16:35-17:00	- Q&A

*The Geological Society of Hong Kong
30th Anniversary Celebration*



Field Trip Options

A) Boat Trip to Tung Lung Chau and Po Toi Island

Assembly Place: Sai Wan Ho Public Pier **Time / Date:** 9am-6pm, 30th June 2012
Trip Leader: Ms. Denise Tang, HK Geological Survey **Limit:** 40 Persons

The boat trip will take participants to two outlying islands, Tung Lung Chau and Po Toi Island, in the southern part of Hong Kong. The rocks exposed on these islands are wholly different, one being volcanic and the other being granitic. Despite that, the geological features there are equally fascinating. The field trip leader, Denise, will explain the latest model of caldera complex in southeast Hong Kong, and discuss the relevant observations on both islands. If time and weather permit, the boat will take a detour and sail around to the Ninepin Group where the columnar jointed tuffs are exposed.

* The group will be dismissed at Stanley Public Pier by around 6pm.

B) Boat Trip to Tolo Channel, Port Island and Double Haven

Assembly Place: Ma Liu Shui Pier **Time / Date:** 9am-6pm, 30th June 2012
Trip Leader: Mr. Patrick Ho, HK Geological Survey **Limit:** 40 Persons

The boat trip will take participants to the northeastern part of Hong Kong, where sedimentary and volcanic rocks of different ages can be observed. Most of the rocks along the north shore of Tolo Channel and at Bluff Head are the oldest in Hong Kong, formed about 400 million years ago during the Devonian Period. Lai Chi Chong showcases various volcanic rocks and sedimentary rocks formed about 146 million years ago. Distinctive geological features, such as faults and folds, are found. Two thirds of Port Island consists of red sedimentary rocks, which are mainly conglomerate, sandstone and siltstone, formed about 100 million years ago during the Late Cretaceous Period. At that time, the climate was dry and hot, and iron in the sediments oxidized, turning the rocks red. If time permits, we will go to Double Haven, where there are younger Late Cretaceous red sedimentary rocks and older Jurassic tuff.

C) Field Trip to Palaeovolcanic Plugs in Tsing Shan Monastery

Assembly Place: Cityview Hotel, Yau Ma Tei **Time / Date:** 9am-5pm, 30th June 2012
Trip Leader: Mr. K W Lai, Fugro (Hong Kong) Ltd. **Limit:** 24 Persons

Field visit to Tsing Shan area where a series of rarely and distinctively palaeovolcanic plugs can be found. They are mostly cylinder to cylindroid in shape with stratovolcanic deposits surrounding the magnificent volcanic tower. The plugs are composed of explosive breccias and andesite-dacite lava with air and lava flow structures.

* Please be reminded to wear hiking boots, a hat, and sunglasses for the field trip. Please bring along sufficient drinking water as it will be hot.

* If there are less than 10 participants for any of the trip, the trip will be cancelled. Participants will be arranged to join another trip according to their preference as far as possible.

